

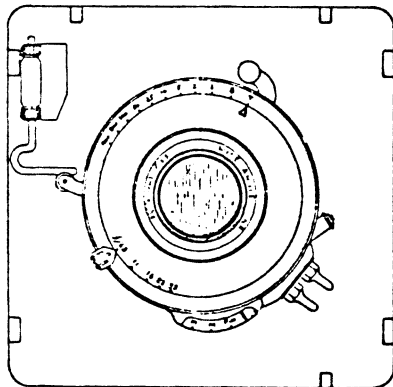
Price \$1.00

SECTION 8A

LENSBOARDS

For
SUPER GRAPHIC[®] AND SUPER SPEED GRAPHIC[®]

SHUTTER FITTING INSTRUCTIONS
And
PARTS CATALOG



DECEMBER 1963

GRAFLEX

**GP GENERAL
PRECISION**

A SUBSIDIARY OF GENERAL PRECISION EQUIPMENT CORPORATION

TABLE OF CONTENTS

Par.		Page
A.	GENERAL	1
B.	TOOLS	1

LENSBOARD FITTING INSTRUCTIONS
FOR

C.	#1 Graphex or Rapax Shutter	2
D.	#2 Graphex or Rapax Shutter	4
E.	#3 Graphex or Rapax Shutter	6
F.	#0 Synchro-Compur Shutter (DIN flash fitting)	8
G.	#1 Graphic Synchro-Compur (ASA bayonet flash fitting)	10
H.	#1 Synchro-Compur (DIN flash fitting)	12
J.	#2 Supermatic Shutter (Bi-Post flash fitting)	14
K.	#3 Supermatic Shutter	16

A. GENERAL

Full utilization of the Super Graphic Camera requires lens and shutter to be fitted on a Super Graphic lensboard. The lensboard provides the mechanical and electrical link between the lens and the Super Graphic Camera.

Lensboards covered in this section are for lenses and shutters normally listed by Graflex. Other lens and shutter combinations may be accommodated through the use of a blank metal lensboard, which must be cut to fit the mounting diameter of the shutter. When a blank lensboard is used the shutter can only be operated manually or will require an external solenoid and the use of conventional solenoid and/or shutter cords to complete flash synchronization.

NOTE: It is recommended that all initial lenses and shutters used on the Super Graphic Camera be sent to the nearest Graflex Service Department for lensboard fitting and optical lens measurement to determine actual focal length of lens (lens travel) and proper cam selection. See last page of section, for address of nearest Graflex Service Department.

B. TOOLS AND MATERIALS

1. Tools

- (a) Adjustable Spanner wrench.
- (b) Small screw driver.
- (c) Small paint brush.
- (d) Miscellaneous standard tools.

2. Materials

- (a) Glyptol.
- (b) Dull black lacquer (air dry).

C. FITTING INSTRUCTIONS FOR #1 GRAPHEX OR RAPAX SHUTTER

NOTE: Lensboard does not include a shutter assembly. Therefore only lensboard component parts are referenced with numbers corresponding to those illustrated in Figure 1 and Parts List on Page 3.

Procedure:

1. If necessary, remove lock nut on shutter assembly.
2. Rotate right and left contact posts (7 and 8) sufficiently to prevent interference with ASA bi-post flash fitting on shutter during proceeding operation.
3. Orient shutter assembly to lensboard, so locating-pin on shutter will mount into matching hole in lensboard. Assemble lock nut to rear of shutter and tighten.
4. Position right and left contact posts (7 and 8) over ASA bi-post flash fitting on shutter. Assemble shutter contact guard (1).
5. Loosen two special knurled machine nuts (6), located on trip rod (5), and adjust height of trip rod as follows:
 - a. Position trip rod so its rests, without side binding, in shutter trip lever groove and adjust trip rod so that, when shutter is released, shutter will reset itself just before trip rod reaches its maximum upward stroke (rest position). Tighten two special machine nuts on trip rod.
 - b. Check above adjustment, by pressing downward on trip rod through its maximum downward stroke. Shutter should release itself. If shutter does not release, repeat 5 above, to arrive at a closer adjustment.
 - c. In order to maintain the above adjustment loosen lower machine nut on trip rod and apply a small amount of glyptol to threads of trip rod (where nut will locate when retightened). Retighten lower machine nut, repeating same procedure with upper machine nut.
 - d. If necessary, touch up any scratched surfaces on lensboard with dull black lacquer.

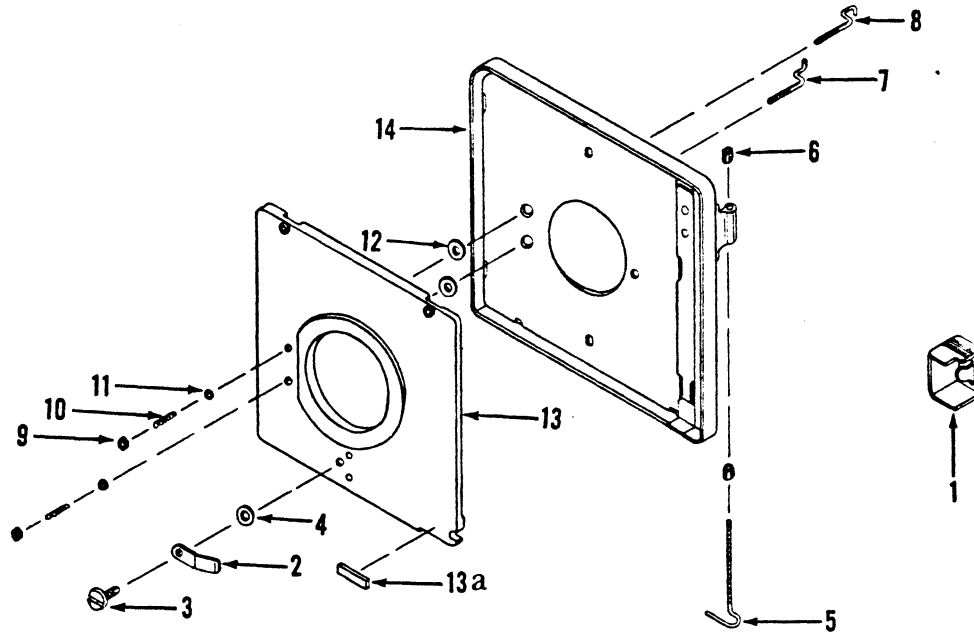


FIGURE 1. LENSBOARD COMPLETE FOR #1 GRAPHEX OR RAPAX SHUTTER

Figure and Index No.	Part Number	1	2	3	4	5	Nomenclature	Qty.	
1-	36260-G4	LENSBOARD COMPLETE - #1 Graphex or Rapax Shutter (ref. Cat. #9701).							Ref.
-1	36237-P3	.					Guard - Shutter Contact.	1	
-2	35470	.					Retainer - Cam	1	
Attaching Parts									
-3	131-4-3A	.					Screw - Thread Cutting, 3/16 in. lg., #4, binding (pan) head, Shakeproof Type 23, steel, Cadmium Plate	1	
-4	33500-P42	.					Washer - Flat, 0.250 in. OD x 0.129 in. ID x 0.062 in. thk., black fibre	1	
-----***-----									
-5	36263-P1	.					Rod - Trip.	1	
Attaching Part									
-6	36264	.					Nut - Machine (Special).	2	
-----***-----									
-7	36261-P3	.					Post Right - Contact	1	
-8	36261-P4	.					Post Left - Contact	1	
Attaching Parts									
-9	200-1HR	.					Nut - Machine, #1 hex., steel, Tin Plate	2	
-10	36327	.					Spring - Contact Post.	2	
-11	33500-P4R	.					Washer - Flat, 0.156 in. OD x 0.076 in. ID x 0.020 in. thk., brass, Tin Plate	2	
-12	35473-P23	.					Washer - Flat 0.312 in. OD x 0.055 in. ID x 0.031 in. thk., black fibre	2	
-----***-----									
-13	36270-G3	.					Base Assembly	1	
-13a	36240-P2	.					Seal - Light, (used on early models), 1/8 in. wd. x 1/2 in. lg. x 1/16 in. thk., black sponge rubber.	1	
-14	36265-G4	.					Lensboard Assembly	1	

D. FITTING INSTRUCTIONS FOR #2 GRAPHEX OR RAPAX SHUTTER

NOTE: Lensboard does not include a shutter assembly. Therefore only lensboard component parts are referenced with numbers corresponding to those illustrated in Figure 2 and Parts List on Page 5.

Procedure:

1. If necessary, remove lock nut on shutter assembly.
2. Rotate right and left contact posts (7 and 8) sufficiently to prevent interference with ASA bi-post flash fitting on shutter during proceeding operation.
3. Orient shutter assembly to lensboard, so locating-pin on shutter will mount into matching hole in lensboard. Assemble lock nut to rear of shutter and tighten.
4. Position right and left contact posts (7 and 8) over ASA bi-post flash fitting on shutter. Assemble shutter contact guard (1).
5. Loosen two special knurled machine nuts (6), located on trip rod (5), and adjust height of trip rod as follows:
 - a. Position trip rod so it rests, without side binding, in shutter trip lever groove and adjust trip rod so that, when shutter is released, shutter will reset itself just before trip rod reaches its maximum upward stroke (rest position). Tighten two special machine nuts on trip rod.
 - b. Check above adjustment, by pressing downward on trip rod through its maximum downward stroke. Shutter should release itself. If shutter does not release, repeat 5 above, to arrive at a closer adjustment.
 - c. In order to maintain the above adjustment loosen lower machine nut on trip rod and apply a small amount of glyptol to threads of trip rod (where nut will locate when retightened). Retighten lower machine nut, repeating same procedure with upper machine nut.
 - d. If necessary, touch up any scratched surfaces on lensboard with dull black lacquer.

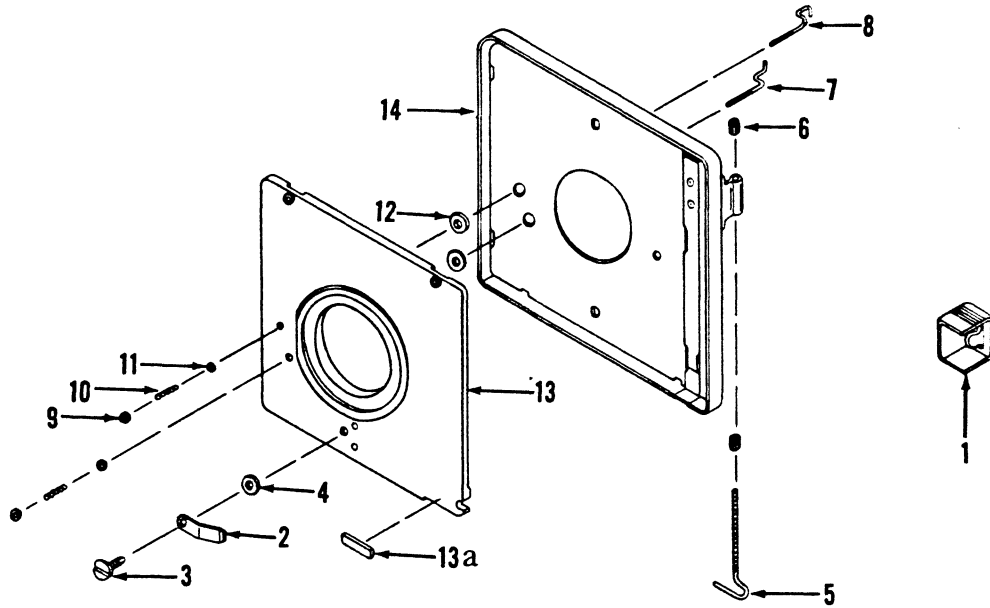


FIGURE 2. LENSBOARD COMPLETE FOR #2 GRAPHEX OR RAPAX SHUTTER

Figure and Index No.	Part Number	1	2	3	4	5	Nomenclature	Qty.
2-	36260-G5	LENSBOARD COMPLETE - #2 Graphex or Rapax Shutter (ref. (Cat. #9702)					Ref.	
-1	36237-P2	.	Guard - Shutter Contact.				1	
-2	35470	.	Retainer - Cam				1	
Attaching Parts								
-3	131-4-3A	.	Screw - Thread Cutting, 3/16 in. lg., #4, binding (pan) head, Shakeproof Type 23, steel, Cadmium Plate				1	
-4	33500-P42	.	Washer - Flat, 0.250 in. OD x 0.129 in. ID x 0.062 in. thk., black fibre.				1	

-5	36263-P2	.	Rod - Trip.				1	
Attaching Part								
-6	36264	.	Nut - Machine (Special).				2	

-7	36261-P3	.	Post Right - Contact				1	
-8	36261-P4	.	Post Left - Contact.				1	
Attaching Parts								
-9	200-1HR	.	Nut - Machine, #1 hex., steel, Tin Plate				2	
-10	36327	.	Spring - Contact Post.				2	
-11	33500-P4R	.	Washer - Flat, 0.156 in. OD x 0.076 in. ID x 0.020 in. thk., brass, Tin Plate				2	
-12	35473-P23	.	Washer - Flat, 5/16 in. OD x 0.055 in. ID x 0.031 in. thk., black neoprene				2	

-13	36270-G4	.	Base Assembly				1	
-13a	36240-P2	.	Seal - Light (used on early models), 1/8 in. wd. x 1/2 in. lg. x 1/16 in. thk., black sponge rubber.				1	
-14	36265-G5	.	Lensboard Assembly				1	

E. FITTING INSTRUCTIONS FOR #3 GRAPHEX OR RAPAX SHUTTER

NOTE: Lensboard does not include a shutter assembly. Therefore only lensboard component parts are referenced with numbers corresponding to those illustrated in Figure 3 and Parts List on Page 7.

Procedure:

1. If necessary, remove lock nut on shutter assembly.
2. Rotate right and left contact posts (7 and 8) sufficiently to prevent interference with ASA bi-post flash fitting on shutter during proceeding operation.
3. Orient shutter assembly to lensboard, so locating-pin on shutter will mount into matching hole in lensboard. Assemble lock nut to rear of shutter and tighten.
4. Position right and left contact posts (7 and 8) over ASA bi-post flash fitting on shutter. Assemble shutter contact guard (1).
5. Loosen two special knurled machine nuts (6), located on trip rod (5), and adjust height of trip rod as follows:
 - a. Position trip rod so it rests, without side binding, in shutter trip lever groove and adjust trip rod so that, when shutter is released, shutter will reset itself just before trip rod reaches its maximum upward stroke (rest position). Tighten two special machine nuts on trip rod.
 - b. Check above adjustment, by pressing downward on trip rod through its maximum downward stroke. Shutter should release itself. If shutter does not release, repeat 5 above, to arrive at a closer adjustment.
 - c. In order to maintain the above adjustment loosen lower machine nut on trip rod and apply a small amount of glyptol to threads of trip rod (where nut will locate when retightened). Retighten lower machine nut, repeating same procedure with upper machine nut.
 - d. If necessary, touch up any scratched surfaces on lensboard with dull black lacquer.

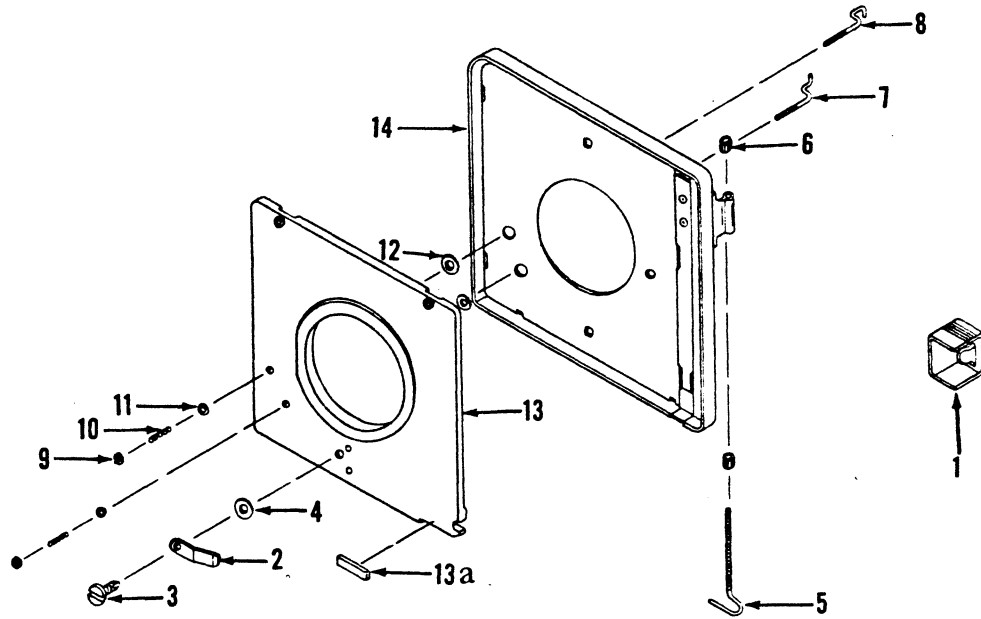


FIGURE 3. LENSBOARD COMPLETE FOR #3 GRAPHEX OR RAPAX SHUTTER

Figure and Index No.	Part Number	1	2	3	4	5	Nomenclature	Qty.	
3-	36260-G6	LENSBOARD COMPLETE - #3 Graphex or Rapax Shutter (ref. Cat. #9703)							Ref.
-1	36237-P2						Guard - Shutter Contact	1	
-2	35470						Retainer - Cam	1	
Attaching Parts									
-3	131-4-3A						Screw - Thread Cutting, 3/16 in. lg., #4, binding (pan) head, Shakeproof Type 23, steel, Cadmium Plate	1	
-4	33500-P42						Washer - Flat, 0.250 in. OD x 0.129 in. ID x 0.062 in. thk., black fibre	1	

-5	36263-P4						Rod - Trip	1	
Attaching Part									
-6	36264						Nut - Machine (Special)	2	

-7	36261-P3						Post Right - Contact	1	
-8	36261-P4						Post Left - Contact	1	
Attaching Parts									
-9	200-1HR						Nut - Machine, #1 hex., steel, Tin Plate	2	
-10	36327						Spring - Contact Post	2	
-11	33500-P4R						Washer - Flat, 0.156 in. OD x 0.076 in. ID x 0.020 in. thk., brass, Tin Plate	2	
-12	35473-P23						Washer - Flat, 5/16 in. OD x 0.055 in. ID x 0.031 in. thk., black neoprene	2	

-13	36270-G5						Base Assembly	1	
-13a	36240-P2						Seal - Light (used on early models), 1/8 in. wd. x 1/2 in. lg. x 1/16 in. thk., black sponge rubber	1	
-14	36265-G6						Lensboard Assembly	1	

F. FITTING INSTRUCTIONS FOR #1 SYNCHRO-COMPUR SHUTTER (DIN Flash Fitting)

NOTE: Lensboard does not include a shutter assembly. Therefore only lensboard component parts are referenced with numbers corresponding to those illustrated in Figure 4 and Parts List on Page 9.

Procedure:

1. If necessary, remove lock nut on shutter assembly.
2. Assemble shutter contact sleeve (2) over DIN flash fitting, on shutter assembly, and position shutter assembly to lensboard, so shaft portion on contact assembly (8) fits into DIN flash fitting on shutter and locating-pin on shutter will mount into matching hole in lensboard. Assemble shutter lock nut and tighten.
3. Assemble shutter contact guard (1).
4. Loosen two special knurled machine nuts (7) located on trip rod (6) and adjust height of trip rod as follows:
 - a. Position trip rod so it rests, without side binding, in shutter trip lever groove and adjust trip rod so that, when shutter is released, shutter will reset itself just before trip rod reaches its maximum upward stroke (rest position). Tighten two special machine nuts on trip rod.
 - b. Check above adjustment, by pressing downward on trip rod through its maximum downward stroke. Shutter should release itself. If shutter does not release, repeat 4 above, to arrive at a closer adjustment.
 - c. In order to maintain the above adjustment loosen lower machine nut on trip rod and apply a small amount of glyptol to threads of trip rod (where nut will locate when retightened). Retighten lower machine nut, repeating same procedure with upper machine nut.
 - d. If necessary, touch up any scratched surfaces on lensboard with dull black lacquer.

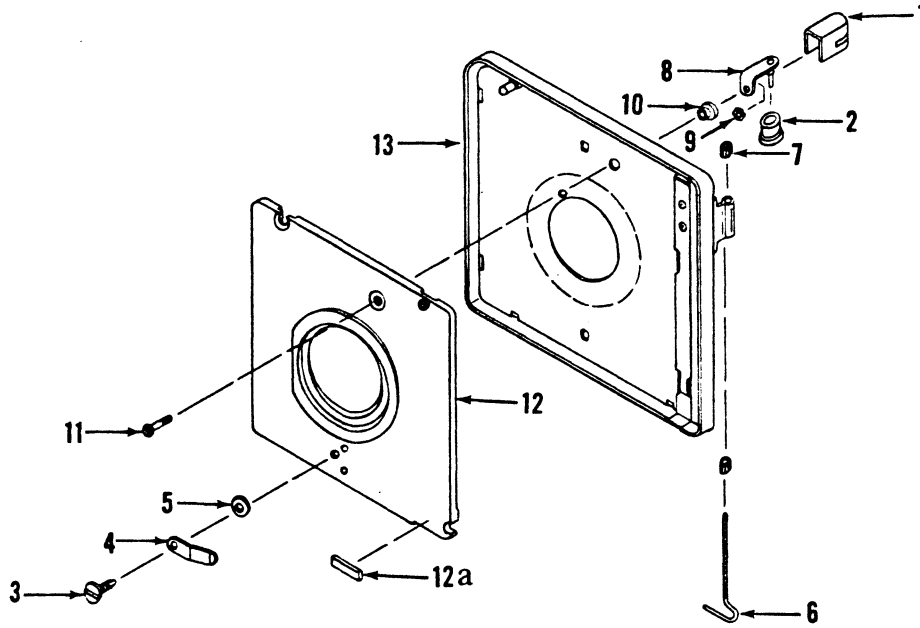


FIGURE 4. LENSBOARD COMPLETE FOR #0 SYNCHRO-COMPURE SHUTTER w/DIN Flash Fitting

Figure and Index No.	Part Number	1	2	3	4	5	Nomenclature	Qty.	
4-	36260-G10	LENSBOARD COMPLETE - #0 Synchro-Compur (DIN Flash Fitting) - ref. Cat. #9704						Ref.	
-1	36241-P1	.					Guard - Shutter Contact.	1	
-2	36238-P1	.					Sleeve - Shutter Contact	1	
-3	35470	.					Retainer - Cam	1	
		Attaching Parts							
-4	131-4-3A	.					Screw - Thread Cutting, 3/16 in. lg., #4, binding (pan) head Shakeproof Type 23, steel, Cadmium Plate	1	
-5	33500-P42	.					Washer - Flat, 0.250 in. OD x 0.129 in. ID x 0.062 in. thk., black fibre.	1	

-6	36263-P5	.					Rod - Trip.	1	
		Attaching Part							
-7	36264	.					Nut - Machine (Special).	2	

-8	36224-G1	.					Contact Assembly.	1	
		Attaching Parts							
-9	200B1HC	.					Nut - Machine, #1 hex., brass, Chrome Plate	1	
-10	36222	.					Insulator - Contact	1	
-11	36221	.					Screw - Machine (Special)	1	

-12	36270-G7	.					Base Assembly	1	
-12a	36240-P2	.	.				Seal - Light (used on early models), 1/8 in. wd. x 1/2 in. lg. x 1/16 in. thk., black sponge rubber.	1	
-13	36265-G7	.					Lensboard Assembly	1	

G. FITTING INSTRUCTIONS FOR #1 GRAPHIC SYNCHRO-COMPUR SHUTTER (ASA Bayonet Flash Fitting)

NOTE: Lensboard does not include a shutter assembly. Therefore only lensboard component parts are referenced with numbers corresponding to those illustrated in Figure 5 and Parts List on Page 11.

Procedure:

1. If necessary, remove lock nut on shutter assembly.
2. Assemble shutter contact sleeve (2) over ASA bayonet flash fitting on shutter assembly.
3. Orient shutter assembly to lensboard, so locating-pin on shutter will mount into matching hole in lensboard. Assemble lock nut to rear of shutter and tighten. The contact of ASA bayonet flash fitting on shutter should rest against contact (8) on lensboard. Adjust if necessary and assemble shutter contact guard (1).
4. Loosen two special knurled machine nuts (6) located on trip rod (5) and adjust height of trip rod as follows:
 - a. Position trip rod so it rests, without side binding, in shutter trip lever groove and adjust trip rod so that, when shutter is released, shutter will reset itself just before trip rod reaches its maximum upward stroke. (rest position). Tighten two special machine nuts on trip rod.
 - b. Check above adjustment, by pressing downward on trip rod through its maximum downward stroke. Shutter should release itself. If shutter does not release, repeat 4 above; to arrive at a closer adjustment.
 - c. In order to maintain the above adjustment loosen lower machine nut on trip rod and apply a small amount of glyptol to threads of trip rod (where nut will locate when retightened). Retighten lower machine nut, repeating same procedure with upper machine nut.
 - d. If necessary, touch up any scratched surfaces on lensboard with dull black lacquer.

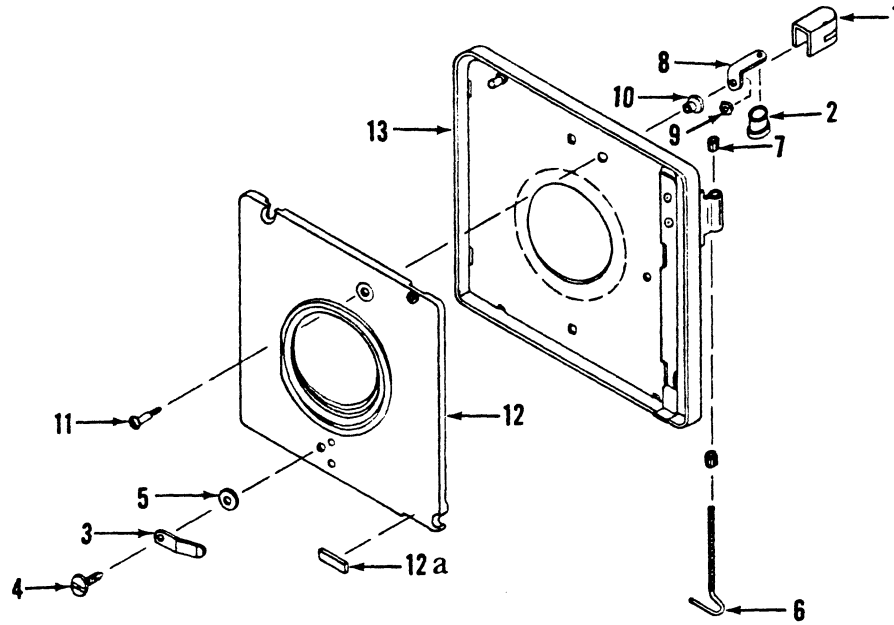


Figure 5. LENSBOARD COMPLETE FOR #1 GRAPHIC SYNCHRO-COMPUR SHUTTER w/ASA Bayonet Flash Fitting

Figure and Index No.	Part Number	1	2	3	4	5	Nomenclature	Qty.	
5-	36260-G8	LENSBOARD COMPLETE - #1 GRAPHIC SYNCHRO-COMPUR (ASA Bayonet Flash Fitting) - ref. Cat. #9705							Ref.
-1	36241-P1	Guard - Shutter Contact	1	
-2	36238-P2	Sleeve - Shutter Contact	1	
-3	35470	Retainer - Cam	1	
		Attaching Parts							
-4	131-4-3A	Screw - Thread Cutting, 3/16 in. lg., #4, binding (pan) head, Shakeproof Type 23, steel, Cadmium Plate	1	
-5	33500-P42	Washer - Flat 0.250 in. OD x 0.129 in. ID x 0.062 in. thk., black fibre.	1	

-6	36263-P4	Rod - Trip	1	
		Attaching Part							
-7	36264	Nut - Machine (Special).	2	

-8	36223-P1	Contact - Shutter	1	
		Attaching Parts							
-9	200B1HC	Nut - Machine, #1 hex., brass, Chrome Plate	1	
-10	36222	Insulator - Contact	1	
-11	36221	Screw - Special	1	

-12	36270-G6	Base Assembly	1	
-12a	36240-P2	Seal - Light (used on early models), 1/8 in. wd. x 1/2 in. lg. x 1/16 in. thk., black sponge rubber	1	
-13	36265-G8	Lensboard Assembly	1	

H. FITTING INSTRUCTIONS FOR #1 SYNCHRO-COMPUR SHUTTER
(DIN Flash Fitting)

NOTE: Lensboard does not include a shutter assembly. Therefore only lensboard component parts are referenced with numbers corresponding to those illustrated in Figure 6 and Parts List on Page 13.

Procedure:

1. If necessary, remove lock nut on shutter assembly.
2. Assemble shutter contact sleeve (2) over DIN flash fitting, on shutter assembly, and position shutter assembly to lensboard, so shaft portion on contact assembly (8) fits into DIN flash fitting on shutter and locating-pin on shutter will mount into matching hole in lensboard. Assemble shutter lock nut and tighten.
3. Assemble shutter contact guard (1).
4. Loosen two special knurled machine nuts (7) located on trip rod (6) and adjust height of trip rod as follows:
 - a. Position trip rod so it rests, without side binding, in shutter trip lever groove and adjust trip rod so that, when shutter is released, shutter will reset itself just before trip rod reaches its maximum upward stroke. (rest position). Tighten two special machine nuts on trip rod.
 - b. Check above adjustment, by pressing downward on trip rod through its maximum downward stroke. Shutter should release itself. If shutter does not release, repeat 4 above, to arrive at a closer adjustment.
 - c. In order to maintain the above adjustment loosen lower machine nut on trip rod and apply a small amount of glyptol to threads of trip rod (where nut will locate when retightened). Retighten lower machine nut, repeating same procedure with upper machine nut.
 - d. If necessary, touch up any scratched surfaces on lensboard with dull black lacquer.

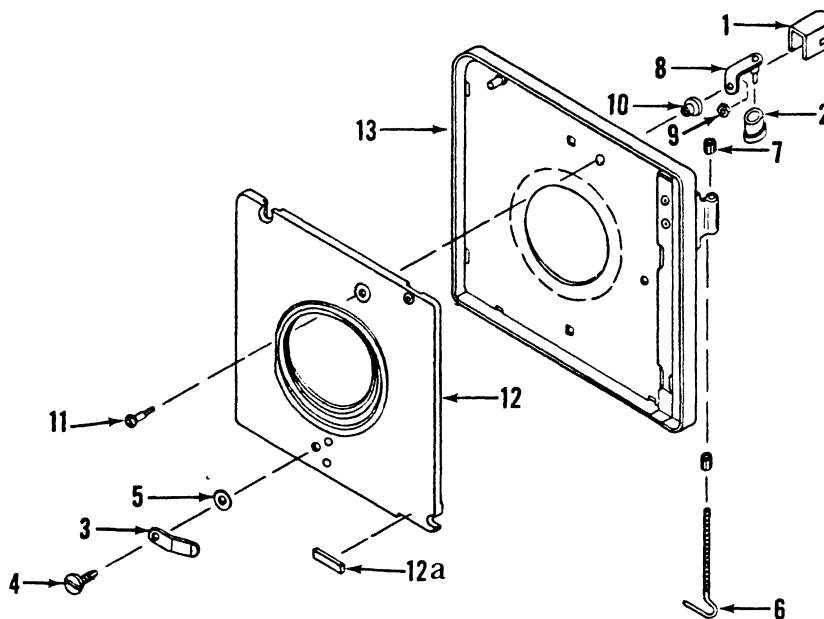


Figure 6. LENSBOARD COMPLETE FOR #1 SYNCHRO-COMPUR SHUTTER
w/DIN Flash Fitting

Figure and Index No.	Part Number	1	2	3	4	5	Nomenclature	Qty.
6-	36260-G9	LENSBOARD COMPLETE - #1 SYNCHRO-COMPUR (DIN Flash Fitting) - ref. Cat. #9706						Ref.
-1	36241-P1	.	Guard - Shutter Contact.					1
-2	36238-P1	.	Sleeve - Shutter Contact					1
-3	35470	.	Retainer - Cam					1
Attaching Parts								
-4	131-4-3A	.	Screw - Thread Cutting, 3/16 in. lg., #4, binding (pan) head, Shakeproof Type 23, steel, Cadmium Plate					1
-5	33500-P42	.	Washer - Flat, 0.250 in. OD x 0.129 in. ID x 0.062 in. thk., black fibre.					1
-----*								
-6	36263-P4	.	Rod - Trip.					1
Attaching Part								
-7	36264	.	Nut - Machine (Special).					2
-----*								
-8	36224-G1	.	Contact Assembly.					1
Attaching Part								
-9	200B1HC	.	Nut - Machine, #1 hex., brass, Chrome Plate					1
-10	36222	.	Insulator - Contact					1
-11	36221	.	Screw - Machine (Special)					1
-----*								
-12	36270-G6	.	Base Assembly					1
-12a	36240-P2	.	Seal - Light (used on early models), 1/8 in. wd. x 1/2 in. lg. x 1/16 in. thk., black sponge rubber.					1
-13	36265-G8	.	Lensboard Assembly					1

J. FITTING INSTRUCTIONS FOR #2 SUPERMATIC SHUTTER (Bi-post Flash Fitting)

NOTE: Lensboard does not include a shutter assembly. Therefore only lensboard component parts are referenced with numbers corresponding to those illustrated in Figure 7 and Parts List on Page 15.

Procedure:

1. If necessary, remove lock nut on shutter assembly.
2. Rotate right and left contact posts (7 and 8) sufficiently to prevent interference with ASA bi-post flash fitting on shutter during proceeding operation.
3. Orient shutter assembly to lensboard, so locating-pin on shutter will mount into matching hole in lensboard. Assemble lock nut to rear of shutter and tighten.
4. Position right and left contact posts (7 and 8) over ASA bi-post flash fitting on shutter. Assemble shutter contact guard (1).
5. Loosen two special knurled machine nuts (6) located on trip rod (5) and adjust height of trip rod as follows:
 - a. Position trip rod so it rests, without side binding, in shutter trip lever groove and adjust trip rod so that, when shutter is released, shutter will reset itself, just before trip rod reaches its maximum upward stroke. (rest position). Tighten two special machine nuts on trip rod.
 - b. Check above adjustment by pressing downward on trip rod through its maximum downward stroke. Shutter should release itself. If shutter does not release, repeat 5 above to arrive at a closer adjustment.
 - c. In order to maintain the above adjustment, loosen lower machine nut on trip rod and apply a small amount of glyptol to threads of trip rod (where nut will locate when retightened). Retighten lower machine nut, repeating same procedure with upper machine nut.
 - d. If necessary, touch up any scratched surfaces on lensboard with dull black lacquer.

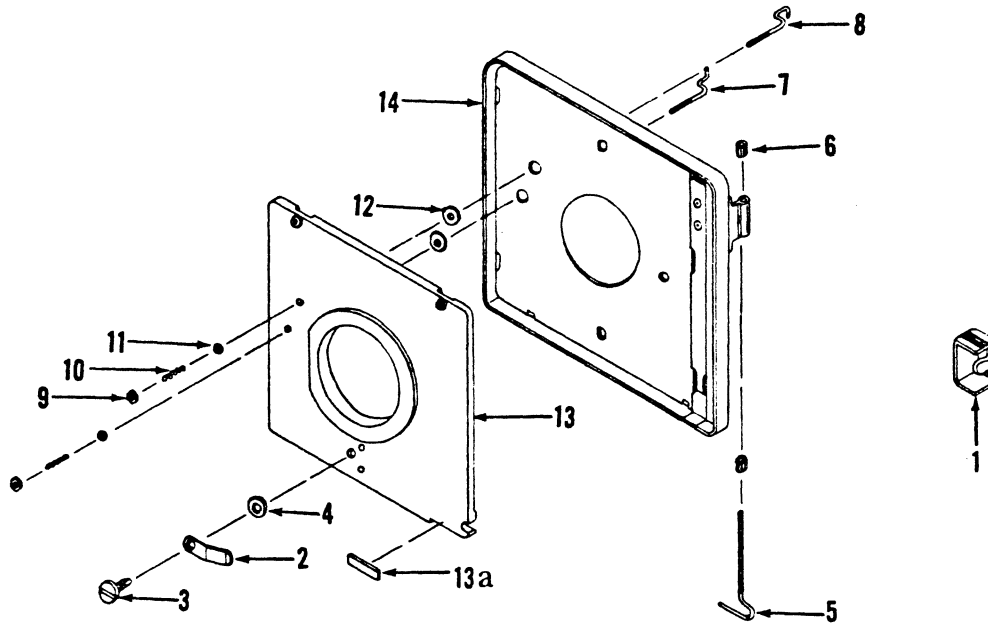


Figure 7. LENSBOARD COMPLETE FOR #2 SUPERMATIC SHUTTER
w/Bi-Post Flash Fitting

Figure and Index No.	Part Number	1	2	3	4	5	Nomenclature	Qty.	
7-	36260-G2	LENSBOARD COMPLETE - #2 Supermatic Shutter (w/Bi-Post Flash Fitting) - ref. Cat. #9707							Ref.
-1	36237-P1	.					Guard - Shutter Contact	1	
-2	35470	.					Retainer - Cam	1	
	Attaching Parts								
-3	131-4-3A	.					Screw - Thread Cutting, 3/16 in. lg., #4, binding head, Shakeproof Type 23, steel, Cadmium Plate	1	
-4	33500-P42	.					Washer - Flat, 0.250 in. OD x 0.129 in. ID x 0.062 in. thk., black fibre	1	

-5	36263-P2	.					Rod - Trip	1	
	Attaching Part								
-6	36264	.					Nut - Machine (Special)	2	

-7	36261-P1	.					Post Right - Contact	1	
-8	36261-P2	.					Post Left - Contact	1	
	Attaching Parts								
-9	200-1HR	.					Nut - Machine, #1 hex, steel, Tin Plate	2	
-10	36327	.					Spring - Contact Post	2	
-11	33500-P4R	.					Washer - Flat, 0.156 in. OD x 0.076 in. ID x 0.020 in. thk., brass, Tin Plate	2	
-12	35473-P23	.					Washer - Flat, 0.312 in. OD x 0.055 in. ID x 0.031 in. thk., black neoprene	2	
-13	36270-G2	.					Base Assembly	1	
-13a	36240-P2	.					Seal - Light (used on early models), 1/8 in. wd. x 1/2 in. lg. x 1/16 in. thk., black sponge rubber	1	
-14	36265-G2	.					Lensboard Assembly	1	

K. FITTING INSTRUCTIONS FOR #3 SUPERMATIC SHUTTER

NOTE: Lensboard does not include a shutter assembly. Therefore only lensboard component parts are referenced with numbers corresponding to those illustrated in Figure 8 and Parts List on Page 17.

Procedure:

1. If necessary, remove lock nut on shutter assembly.
2. Assemble shutter cocking knob (2) over stud located on shutter cocking lever.
3. Assemble shutter shim (1) to shutter assembly.
4. Orient shutter to lensboard assembly (10), so locating-pin on shutter will mount into matching hole in lensboard. Assemble lensboard base (7) and lock nut to rear of shutter and tighten lock nut.
5. Loosen two special knurled machine nuts (6), located on trip rod (5), and adjust height of trip rod as follows:
 - a. Position trip rod so it rests, without side binding, in shutter trip lever groove and adjust trip rod so that, when shutter is released, shutter will reset itself just before trip rod reaches its maximum upward stroke (rest position). Tighten two special machine nuts on trip rod.
 - b. Check above adjustment, by pressing downward on trip rod through its maximum downward stroke. Shutter should release itself. If shutter does not release, repeat 5 above, to arrive at a closer adjustment.
 - c. In order to maintain the above adjustment, loosen lower machine nut on trip rod and apply a small amount of glyptol to threads of trip rod (where nut will locate when retightened). Retighten lower machine nut, repeating same procedure with upper machine nut.
 - d. If necessary, touch up any scratched surfaces on lensboard with dull black lacquer.

NOTE: REQUIRES SHUTTER CORD FOR FLASH SYNCHRONIZATION

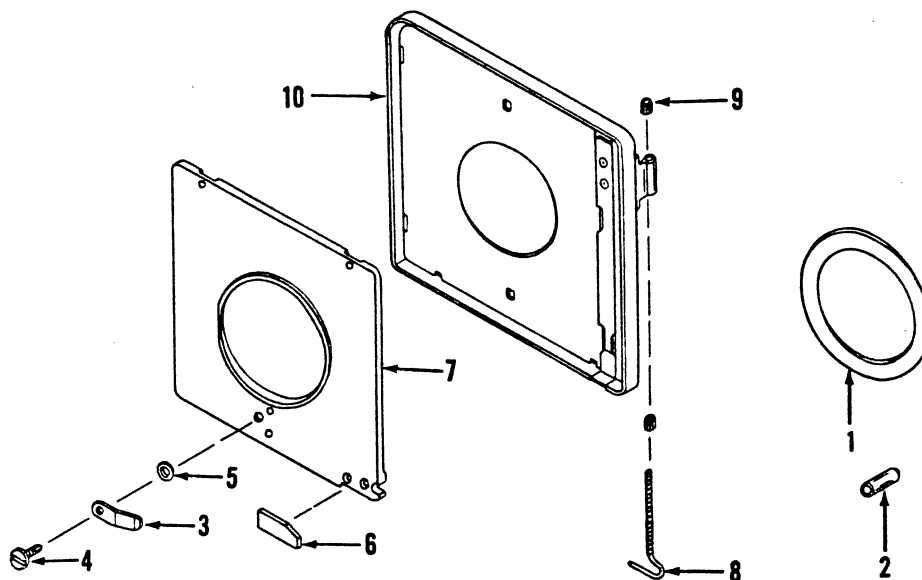


Figure 8. LENSBOARD COMPLETE FOR #3 SUPERMATIC SHUTTER

Figure and Index No.	Part Number	1	2	3	4	5	Nomenclature	Qty.
8-	36260-G3	LENSBOARD COMPLETE - #3 Supermatic Shutter (ref. Cat. #9708)						Ref.
-1	36274	Shim - Shutter	1
-2	36239	Knob - Shutter Cocking	1
-3	35470	Retainer - Cam	1
Attaching Parts								
-4	131-4-3A	Screw - Thread Cutting, 3/16 in. lg., #4, binding (pan) head, Shakeproof Type 23, steel, Cadmium Plate	1
-5	33500-P42	Washer - Flat, 0.250 in. OD x 0.129 in. ID x 0.062 in. thk., black fibre.	1

-6	36315	Seal - Light	1
-7	36271-P4	Base - Lensboard	1
-8	36263-P3	Rod - Trip	1
Attaching Part								
-9	36264	Nut - Machine (Special)	2

-10	36265-G3	Lensboard Assembly	1